

## **RX-8/4 RF System Receiver Board** WIZ-RX8M/4T

**Overview**

### **RF WIZ-RX8M/4T Receiver Board**

Type: RF Radio (418MHz) 1-4 Channels and 1-8 Channels (FCC Part 15 Compliant Components).

Operating Voltage: 9-12 VDC @ 1 Amp (Wall Power Supply Adapter, 1Amp Battery Supply).

Antenna: Adjustable Angle, Receiver Antenna 418 MHz (2" long).

Control Output Mode: Momentary-8CH / Toggle-4CH, on-board DIP Switch user selection set.

LED Channel Status: Ch1-4 LED's On/Off, MODE Indicator- Receiver Activity, Learn mode.

Switched Output Application: -TTL VDC (1-5vdc) switched output voltage at 200 mAmp per channel.

Channels 1-8 TTL VDC, On-board Connector for +VDC circuit return.

**BOARD:** wire terminal connections, LEDs on receiver board for CH1-4, Ribbon connector for Ch 1-8 out. 2.5 x 5mm Power jack for power connection. ON-OFF Power Switch, LED Status Lights. 5VDC Regulator for stable operation and various board power supply options. Commercial Grade 3 Layer PCB, with small board footprint size. (3-1/2" L x 2-3/8" W x 1/2" H electronics, 2" long antenna, 3 mounting holes)

**Optional Add-On / AUX Support Boards:** Quick connection to optional add-on application boards

**Switched On-Board Outputs:** On-board wire terminal block for direct application connection to board channels 1-4 outputs. (no optional add-on board required)

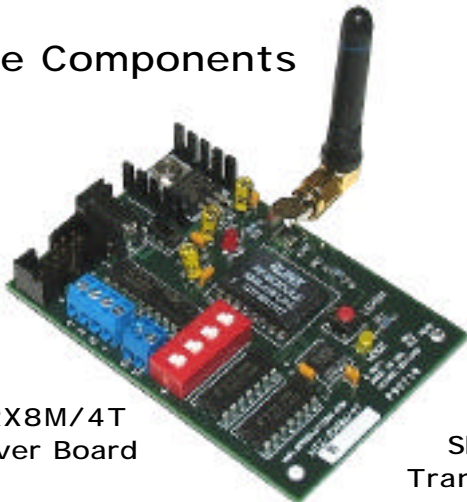
**LEARN Mode:** On-Board button switch, auto code-binding to Transmitter, Status LED.

**System Requirements:** Power Supply, RF Transmitter, Application Device / Load

**Optional AUX Boards:** Relays, Audio Playback, DC Motor Control, Servo Control, Lighting FX, more.

**SET-UP:** Quick connections, on board setting for easy use and user setup operations.

#### Base Components



WIZ-RX8M/4T Receiver Board

#### Optional Transmitters



Long Range Transmitter-8 Ch

Short Range Transmitter-8 Ch

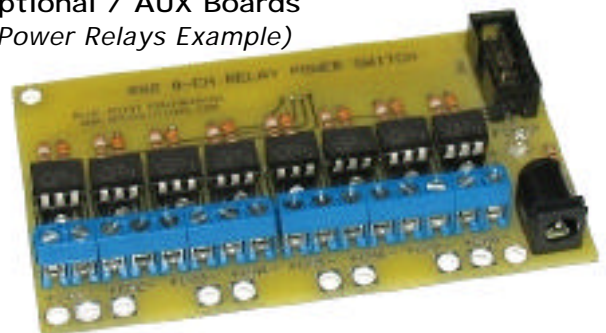
Keyfob Transmitter-5 Ch

#### Optional Add-On Boards

Optional AUX Board Ribbon Connectors

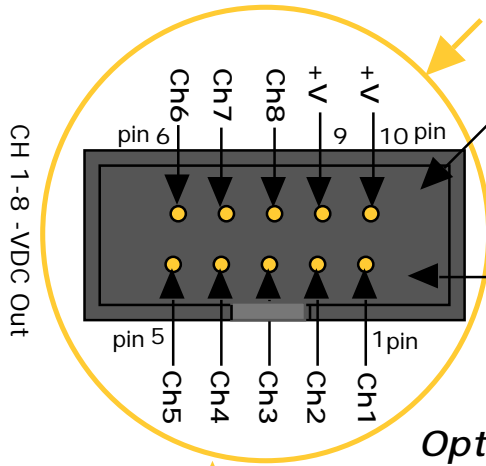


#### Optional / AUX Boards (Power Relays Example)

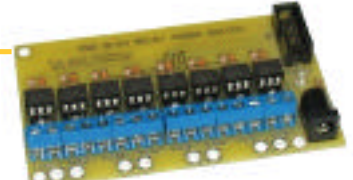


## RX-8/4 RF System Receiver Board WIZ-RX8M/4T

### Set - Up / Components



Optional / AUX Boards  
Ribbon Connector

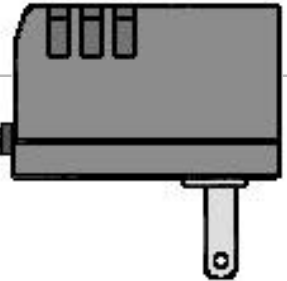


Optional / AUX Boards  
(Power Relays Example)

Pin 1-8 = CHANNELS 1-8 (TTL -4VDC Switched ON / OFF)  
Pin 9-10 = + POWER (TTL +4VDC Output)  
200 mAmp per Ch Load

### Optional Setup

Wall Power Supply  
(9 Vdc @ 1Amp)



### Main Board

2.5x5mm Power Connector

Channel Output Connector  
CH 1-8 -TTLV and -V Outputs

ON / OFF Power Switch

Power LED

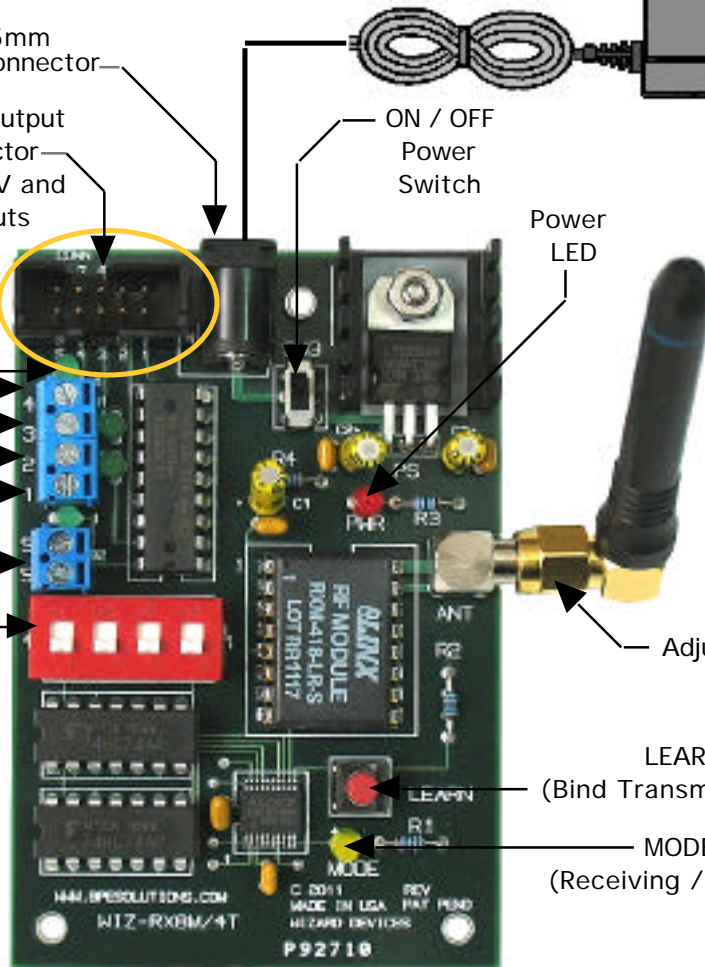
-5VDC Output  
when Switched ON  
200 mAmp per Ch Load

Ch ON- LED  
Channel 4  
Channel 3  
Channel 2  
Channel 1  
Switched ON/OFF  
Channel VDC

Momentary or Toggle  
Switch Block  
Ch 1,2,3,4



Optional RF Transmitters  
Key Fob / Short- Long Range



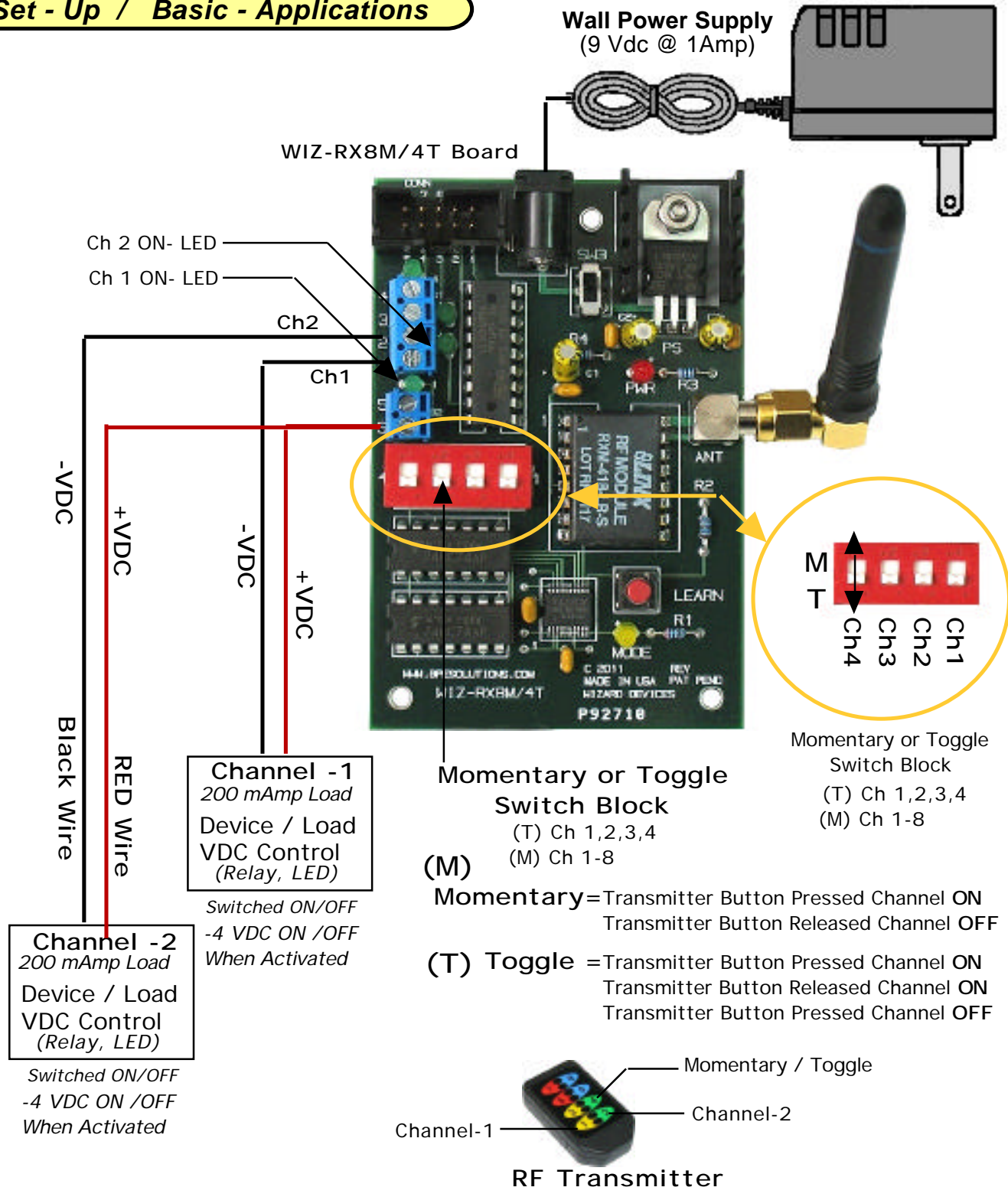
418MHz  
Adjustable Antenna

LEARN Button  
(Bind Transmitter / Receiver)

MODE LED  
(Receiving / RF Activity)

## RX-8/4 RF System Receiver Board WIZ-RX8M/4T

**Set - Up / Basic - Applications**



**Channel -2**  
200 mA Load  
Device / Load  
VDC Control  
(Relay, LED)

Switched ON/OFF  
-4 VDC ON /OFF  
When Activated

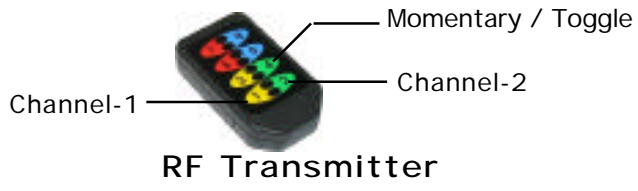
**Channel -1**  
200 mA Load  
Device / Load  
VDC Control  
(Relay, LED)

Switched ON/OFF  
-4 VDC ON /OFF  
When Activated

**Momentary or Toggle Switch Block**  
(T) Ch 1,2,3,4  
(M) Ch 1-8

**(M) Momentary** = Transmitter Button Pressed Channel ON  
Transmitter Button Released Channel OFF

**(T) Toggle** = Transmitter Button Pressed Channel ON  
Transmitter Button Released Channel ON  
Transmitter Button Pressed Channel OFF



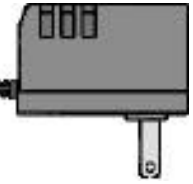
## RX-8/4 RF System Receiver Board WIZ-RX8M/4T

**Set - Up / Basic - Applications**

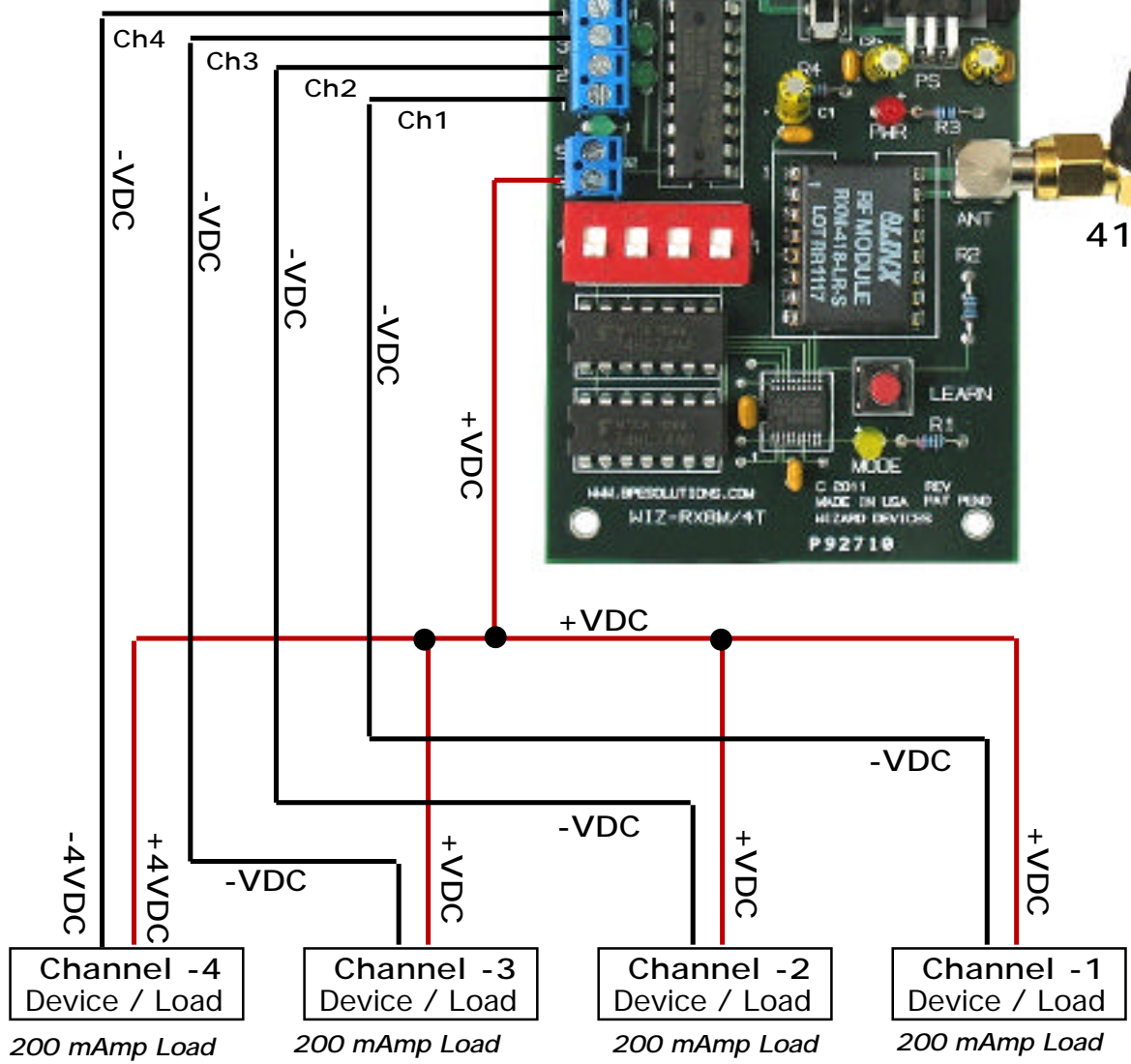
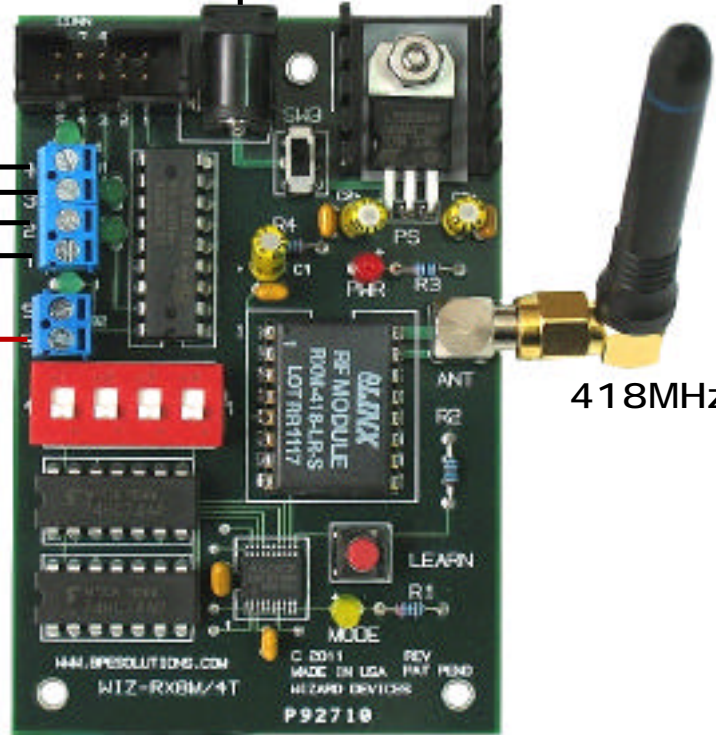


RF Transmitter  
418MHz

Wall Power Supply  
(9 Vdc @ 1Amp)



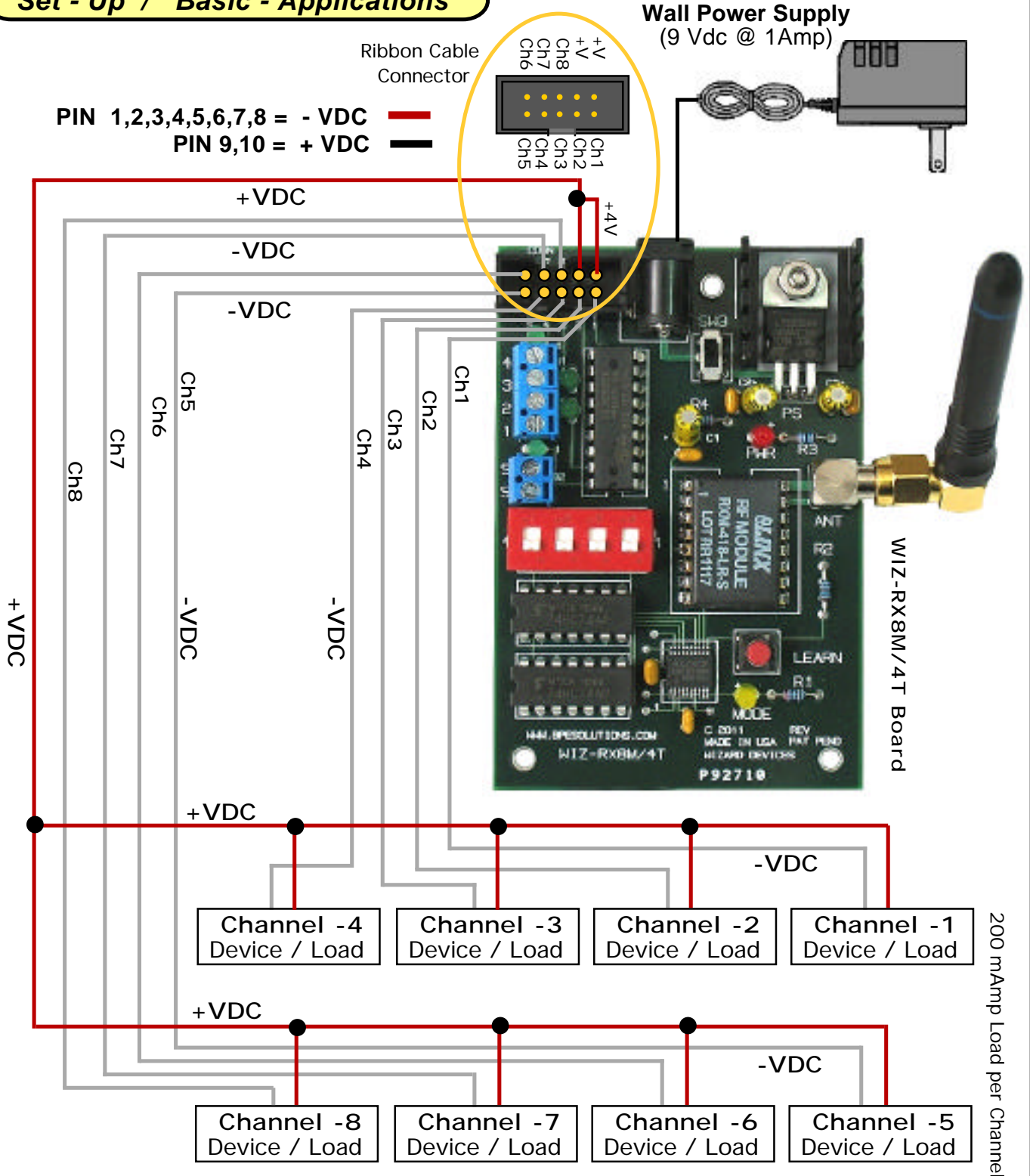
WIZ-RX8M/4T Board



- Channel -4  
Device / Load  
200 mAmp Load
- Channel -3  
Device / Load  
200 mAmp Load
- Channel -2  
Device / Load  
200 mAmp Load
- Channel -1  
Device / Load  
200 mAmp Load

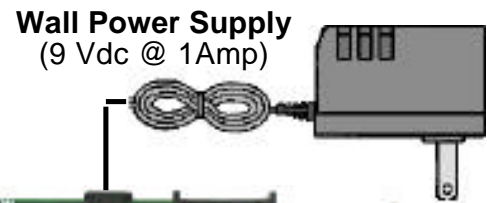
## RX-8/4 RF System Receiver Board WIZ-RX8M/4T

### Set - Up / Basic - Applications



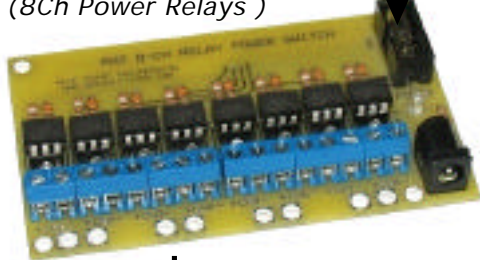
## **RX-8/4 RF System Receiver Board** WIZ-RX8M/4T

**Set - Up / AUX Board Applications**

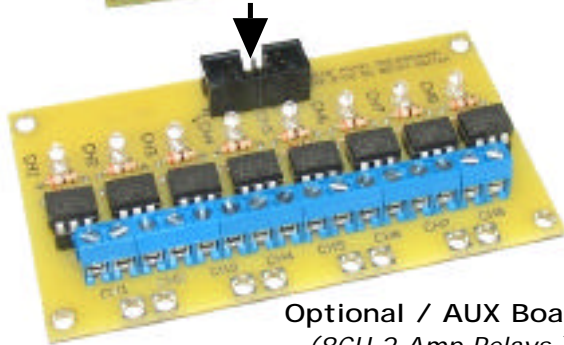


Optional / AUX Boards  
Ribbon Connector

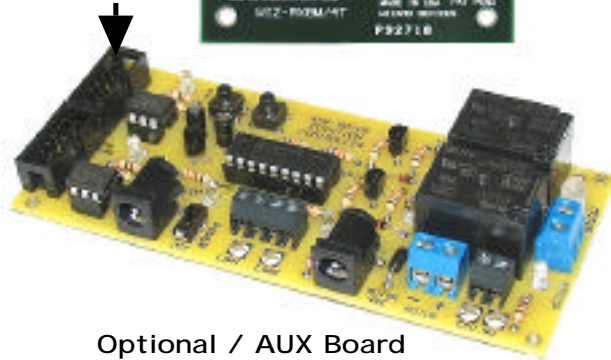
Optional / AUX Board  
(8Ch Power Relays)



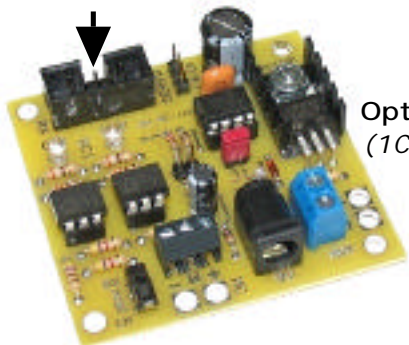
WIZ-RX8M/4T Board



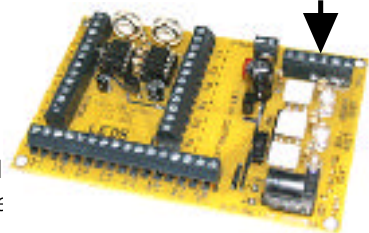
Optional / AUX Board  
(8Ch 2 Amp Relays)



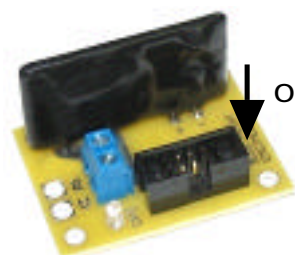
Optional / AUX Board  
(DC Motor Controller)



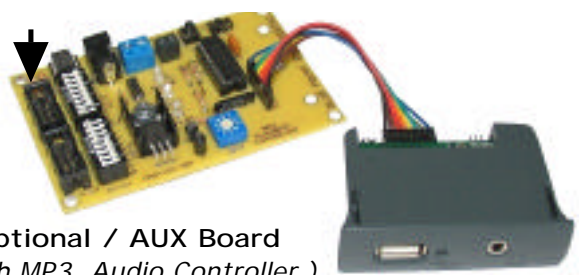
Optional / AUX Board  
(1Ch Servo Controller)



Optional / AUX Board  
(3-Ch LED Effects Controller)



Optional / AUX Board  
(1Ch 5 Amp Relay)



Optional / AUX Board  
(10Ch MP3 Audio Controller)

## **RX-8/4 RF System Receiver Board** WIZ-RX8M/4T

### Set - Up / AUX Board Applications

